

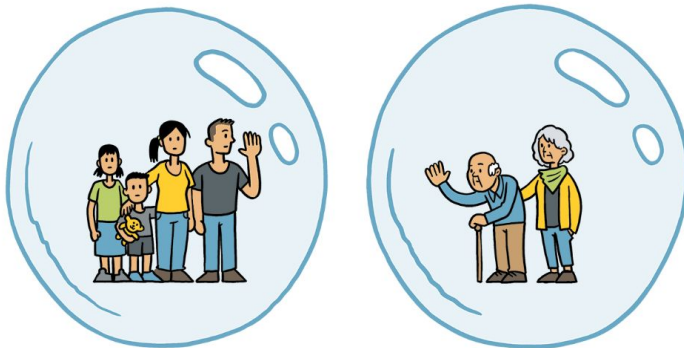
Kia ora e te whānau,

I want to sincerely thank you for responding so promptly regarding your child/children's attendance at school at Alert Level 3. I appreciate you and all you are doing to keep our Deanwell people safe.



It is our responsibility to ensure the safety of all our people. We will have very low numbers of tamariki and kaiako at school from Wednesday 29th April. Tamariki attending school **DO NOT** have an adult at home to look after them.

The overarching aim of Alert Level 3 is to limit the number of additional people (outside your immediate household, your bubble) that you come into close contact with **so that, in the unlikely event of a COVID-19 case, close contacts can be rapidly identified**, and to limit the number of close contacts that would have to undertake 14 days of self-quarantine.



At school under Alert Level 3 we will form school bubbles of 10 tamariki and we will assign 3 kaiako to that bubble. This means that we are potentially joining up to 13 bubbles together. From our data our Deanwell bubbles range in size from 1 person in a bubble to 18 people in a bubble. Please keep your bubbles as small as possible.

If your circumstances change and you are required to leave your bubble to work and you need your child/children to come to school, please contact us immediately. We will then confirm with you the date and time that your child/children can start attending school

NOBODY - NO CHILD/CHILDREN/PARENT/CAREGIVER/WHĀNAU/VISITORS can turn up to school or even come onto school grounds without us knowing.

If a child does come to school that we were not expecting they will need to return home.

For all our tamariki learning at home, keep up with the great work.

- Keep going to the website each Monday for the next weeks 'Home Learning Choice Board'
- Keep working on your home learning packs (For those people that haven't received theirs yet, they should be arriving soon)
- Keep being helpful and kind at home inside your bubble

Whānau, our Deanwell people will continue communicating with you. If you have any questions or just need some awahi, please email us. Our email addresses are all on our website.

Kia manawanui, kia manaaki, kia haumaru!

Pam



Let's keep everyone safe

Visiting your school or early learning service

Please follow these simple rules:



Tell us your plans early

- Let us know early that your child will be attending so we can plan for them.



Essential visitors only

- Please ensure your visits to the school or early learning service are essential.
- Use the sign-posted entry point.



Drop off and pick up your child at the time you are given

- Your early learning service or school may require you to drop off or pick up your child at a particular time.
- Please help with staggered arrival and pick up times, if required.



Record your visit in the register

There are two registers:

- **Visitor register** – All site visitors must be recorded in the visitor register, which will record your name, time in and out, date, phone number and physical address. This assists with contact tracing if necessary.
- **Contact tracing register** – Your school or early learning service also keeps a register that identifies which children and adults are in each teaching space.



Maintain a 2 metre distance at all times

- Keep any on-site visit short.
- Maintain a 2 metre distance from those who are not part of your household, workplace or school bubble.



Sick children must stay at home

- Please keep children at home if they are sick. A sick child will be sent home.
- If your child is at higher risk of severe illness from Covid-19, they must stay at home.



Practice good hygiene

- Wash and dry your hands, cough into your elbow, don't touch your face.
- There's hand sanitiser available around the school or early learning service. Please use this if you touch surfaces.



Covid-19 cases

- You will be advised if your school or early learning service is connected to a confirmed or probable case of Covid-19. You will be advised of any actions to be taken.
- The site must close for 72 hours to allow contact tracing and cleaning. They may be physically closed for a further 14 days.