



Well-being Week



We want to sincerely thank all our whānau for helping us to allow our employees to take time to get well.



School App

Nikki has been working so hard behind the scenes to get this new app doing everything that we want it to do.

You will be able to access your child/children's information, book Student Led Conference interviews, read newsletters and send through absentee notifications.

Please keep an eye out in your emails for your user login information and how to access the app. If you have not already done so.

To whānau who have not logged in yet, you will receive an email which will have instructions on how to install the app.



10 x \$50
New World
Vouchers
to give away.



We would like all whānau to attend the Student Led Conference (SLC).

Monday 27th June, 2022:

3.30pm - 7.30pm

Tuesday 28th June, 2022:

3.30pm - 5.30pm

For every whānau that attend SLC's you can put your name in the draw to win a New World \$50 voucher.

Once you have attended your SLC the classroom teacher will have a form for you to fill in and put into the draw.

Kylie Taplin and I, (Pam Quirke) will draw the 10 names out on Wednesday 29th June.

We will announce the winners in the newsletter in Week 10, Monday 4th July

Be in to win!

DEANWELL SCHOOL BOARD ELECTIONS

19.6.2022

School Board Parent Election 2022

Nomination round

Our school will be undertaking a parent election for 5 School Board vacancies. This process will start with the issuing of nomination papers to our caregiver community by **Friday 15th July 2022**.

We have employed CES to undertake the election process on our behalf. This year with legislative change, our nomination form and full instruction on how to place your nomination into our own School's Election website will be emailed to you if we have your email address in our database or you will receive it by post if we don't have your email in our database.

Nomination papers will also be available at the school office. The school will send those on to CES for processing upon receipt from candidates.

Nominations close on Wednesday 3rd August at 12 noon.

Election day is Wednesday 7th September.

We look forward to your participation in this process.

Wayne Jamieson

Returning Officer

CES

89 Nazareth Avenue | Middleton

Christchurch | PO Box 414

Christchurch 8140

P (03) 338 4444 | Cell 021 399 744



Nominations close on Wednesday 3rd August, 12.00pm

Election day is Wednesday 7th September.

Structured Literacy

How we learn letters and sounds.

LITTLE LEARNERS LOVE LITERACY® Stages 1-7

1	m	s	f	a	p	t	c	i
2	b	h	n	o	d	g	l	v
3	y	r	e	qu	z			
4	j	u	k	x	w			
+4	ll	ss	ff					
	-s suffix							
5	ck	adjacent consonants						
	possessive apostrophe				multisyllabic words			
6	sh	ch	tch	th	ng	ph	wh	
	question marks			exclamation marks		compound words		
7.1	/ā/	ai	ay	eigh aigh ey	/ē/	ee	ea	-y
	/ī/	igh	ie	-y	/ō/	oa		
	homophones		contractions		-ing suffix & doubling spelling rule			

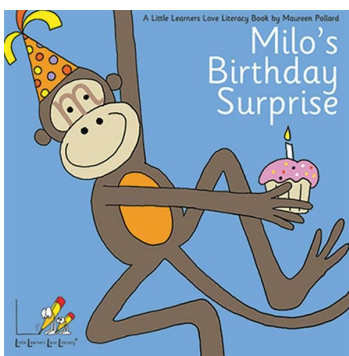
At Deanwell School we actively teach groups of letters in a specific order.

This is called a **Scope and Sequence**.

Starting with Stage 1, tamariki learn the letter **sounds** and **symbols** for each letter.

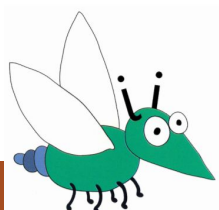
Children need to be able to **say** and **write** each of these sounds.

Children need to be able to say/write simple 3 letter words with these sounds such as sit, fat, tap, map by breaking the sounds apart and putting them back together.

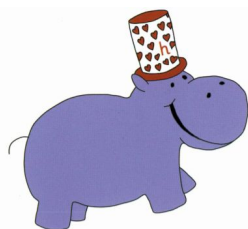


In Junior School Milo Monkey and his friends help us to learn the sounds.

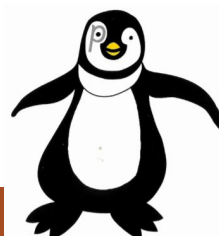
We also learn heart words at each stage. Heart Words are additional words we need to know to be able to make a sentence.



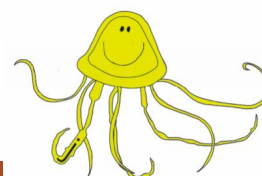
Izzy the insect



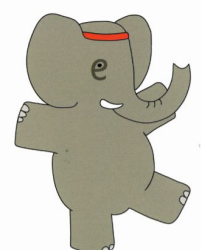
Harry the hippopotamus



Peter the penguin



Jack the jellyfish



Eddy the elephant