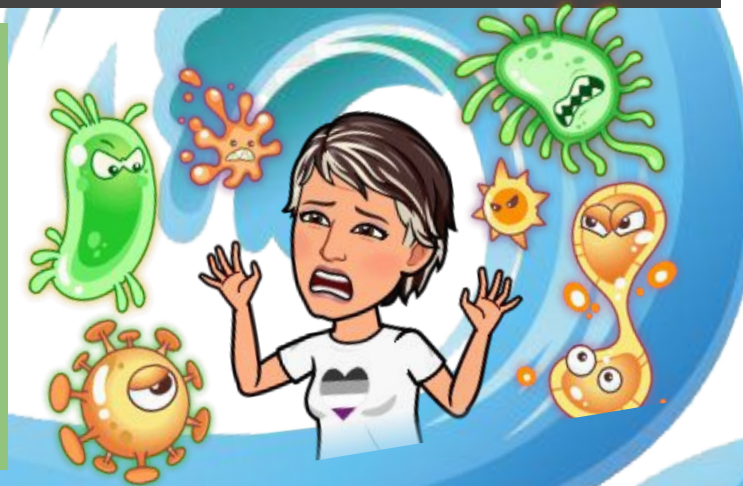




# Health Update



**Thank you to the whānau who supported us last week by keeping your child/children at home when we were unable to staff classes due to illness. Your understanding and cooperation helped us manage a very challenging situation.**



We still have a significant number of staff away today. We appreciate your continued support during this time.

**Please do not send your child or children to school if they are unwell.**

**We sincerely thank our whānau for your understanding.**

## Disability Parking

**As a reminder we have put up a new disability parking sign in the hall car park. This space is reserved for whānau who hold a valid disability parking card.**

**To ensure fair access, please use this park only to drop off or pick up your child and then move on, so that others who need it can also use the space. We have several whānau who rely on this car park, and your consideration is greatly appreciated.**



# Dates for remainder of 2025

## End of Term 3

Friday 19th September

## Beginning of Term 4

Monday 6th October, pōwhiri 9.00 am

### **SCHOOL CLOSED**

**Monday 27th October - Labour Day**

**Friday 21st November - Employee Only Day**

## End of Term 4

Wednesday 17th December

# 2026 Dates Coming

# We have Launched our New Communication App



## Whānau Voice App

We are really excited about this app and the way it allows us to hear your voice quickly and directly. So often, we are making decisions where your perspective as whānau is incredibly important. This app helps us seek your thoughts in real time, ensuring your voice helps shape the direction we take together.

Last Friday, we sent out a survey asking which dates you would prefer the school to be open in 2026. So far, 82 whānau have shared their views. Out of our 360 whānau, that is a great start – and we would love to hear from even more of you. Your feedback will be shared with the Board on Thursday 11th September, where both whānau and employee voice will be considered alongside the impact on student learning.

If you haven't yet downloaded the app, we encourage you to do so. This is a great way to make sure your voice is included, and together we can make well-informed decisions for our tamariki.

**We are  
listening!**

**We want  
to know  
what you  
think.**



The banner features the Hero logo at the top left. In the center, it says 'DOWNLOAD THE HERO APP TODAY!' with 'HERO APP' in yellow. To the right is a rocket ship icon. Below the text are images of the app on a tablet and a smartphone. The tablet screen shows a 'Community Feed' with a post about 'End of Year Celebration of Learning'. The smartphone screen shows the 'Hero School' login page with fields for 'Email' and 'Password', and a 'Log In' button. To the right of the app images is a list of features under the heading 'Log In to Customise Your Account and View:'. At the bottom left are the 'Download on the App Store' and 'GET IT ON Google Play' logos. At the bottom right is a QR code with the text 'SCAN ME TO DOWNLOAD'.

**Log In to Customise Your Account and View:**

- Student Learning Stories, Progress and Goals
- Navigation to School-Related Webpages
- School Notices
- Surveys and Trip Permissions
- School Term Dates
- School Calendar
- Absence Notifications
- School Bookings
- More!

**SCAN ME TO DOWNLOAD**



To learn more go to:  
<https://our-hero.com/parent-guide>