



Property Update



Strategic Maintenance

Replace the damaged and worn wall coverings (autex) in 12 classrooms that improve sound quality, helping students hear and understand lessons more clearly

This was a mammoth task as everything attached to the walls had to be removed and then reinstalled.

✓ **COMPLETED**



Emergent Maintenance

Repair damaged concrete and pot holed asphalt going into the hall car park.

✓ **COMPLETED**



Regular Maintenance - Gardens

New Garden replaces overgrown garden near the hall.

✓ **COMPLETED**



5 Year Property Plan

Planned electrical fuse boards upgrade.

✓ **COMPLETED**

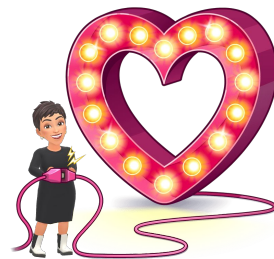
The past 2 weeks have been very busy at school!

6th October 2025

Dear Whānau,

Celebrating Our Community

Today I want to shine a light on our tamariki, you, our whānau, and our Deanwell/Melville community. We feel privileged to teach your child/children every day.



Deanwell School is increasingly recognised as one of the leading schools in Aotearoa, with teaching grounded in science, research, and evidence, and driven by equity and the belief that all children can and will succeed. It is an honour that the hard work of our employees, board, tamariki, and whānau has been acknowledged nationally.

Please know that Deanwell School is apolitical: as government employees, we are committed to advocating for and serving our tamariki, their whānau, and our community. Having worked in education for over 30 years and across many political parties, my focus has always been to ensure that every tamaiti in my care receives the absolute best education possible.

Our Journey

In 2019, we courageously decided to change the way we teach. This was guided by our data, what we knew about effective practice, and what we saw in student behaviour. As a result, we could no longer access Reading Recovery funding, around \$40,000 per year, to provide literacy intervention. While this was a challenge, our approach (now widely known as Structured Literacy) already showed outstanding results for our tamariki.

In 2023, three Deanwell teachers and I attended a Literacy Symposium in Christchurch. The symposium confirmed that our direction was the right one. Determined to advocate for equity in education, I spoke with Erica Stanford, then in opposition, sharing our story, data, and need for fairer funding. I invited her to visit Deanwell.

To our surprise, Erica came to our kura the very next week. She observed Kylie Taplin teaching Multisensory Structured Literacy while I explained why this approach worked. We shared our progress and hopes for curriculum change and more equitable funding. That visit led to ongoing conversations. In 2023, Erica became the Minister of Education, and in 2024, the Prime Minister, Christopher Luxon, visited Deanwell. During his visit, he asked: *"How can we replicate what's happening here at Deanwell in every school in New Zealand?"*

National Recognition

Last term, the Ministry of Education filmed in two of our classrooms to showcase our teaching and our students' learning. Thank you to the whānau who consented to your tamariki participating in this project. The video will be shared at Curriculum Roadshows across New Zealand this October.

Looking Ahead

Deanwell continues to lead in Structured Literacy, explicit Instruction, and the way we deliver learning across the curriculum. Because of this journey, Minister Erica Stanford remains closely interested in the progress of our tamariki and teachers, and she continues to use Deanwell as an exemplary benchmark for best practice in education.

I am delighted to let you know that this year, we finally received the additional funding we had been fighting for, and we have just been told it will continue next year. Due to this funding, thirty students have been receiving literacy intervention this year. So good!

Whānau, You Are Deanwell

You are a vital part of our success story. Our tamariki are thriving, and our teachers are doing outstanding mahi. Together, we are building something very special: an education for our tamariki that we can all be immensely proud of.

Ngā manaakitanga,

Pam Quirke 

Very Proud Principal, Deanwell School

IMPORTANT DATES

Term 4



Thursday 23rd October

Potential Teacher Strike

Due to the number of staff involved and to ensure the safety of students and staff, the school will be closed if the strike goes ahead.

We will keep you updated as new information is provided to us

Monday 27th October

LABOUR DAY - SCHOOL IS CLOSED

Friday 21st November

EMPLOYEES ONLY DAY - SCHOOL IS CLOSED

Wednesday 17th December

Term 4 Ends, 12.30pm - Last Day of the Year

HEALTH CONSULTATION 2025

School Boards are required to engage with the community on their Health Curriculum. This engagement with whānau will support the school in reviewing their current Health Curriculum based on the needs of students.

The results will help us plan what we teach our students.

You will be sent a link to complete a google form survey via email/HERO App

There are six sections. For each section please tick whether you feel it is **very important**, **important** or **not important** to you for your child/children to learn about at Deanwell School.

We appreciate you taking the time to complete this form.

Responses will remain open until Friday, 17 October 2025.

EXAMPLE QUESTION: Physical Activity & Sports Studies

	Very Important	Important	Not Important
Movement skills in a range of areas			
Fairplay - winning and losing graciously			
Teamwork			
Competition as individuals and in teams			
Sportsmanship			
Participation			
Acceptance of difference in ability, gender or culture			

We appreciate your feedback!!!

October is Dyslexia Awareness Month

International
DYSLEXIA
Association



#DyslexiaAroundTheWorld
#UntilEveryoneCanRead

At Deanwell School, all teachers are either trained or currently training in Multisensory Structured Language (MSL). This approach is specifically designed to support learners with dyslexia, as it is structured, systematic, cumulative, flexible, and diagnostic, with the added benefit of a multisensory/multi-modal component. Once teachers complete their training, they all achieve accreditation (AMADA) with the Australian Dyslexia Association. Please know that MSL benefits the learning of all students.

Myth 1

"Dyslexia means you're not smart".



Fact: People with dyslexia often have average or above-average intelligence.

@lexicminds

Myth 2

"Dyslexia only affects reading and writing."



Fact: It can also impact spelling, comprehension, and math skills.

@lexicminds

Myth 3

"Dyslexia is something you can outgrow."



Fact: It is a lifelong difference that benefits from ongoing support.

@lexicminds

Myth 4

Everyone experiences dyslexia in the same way.



Fact: Dyslexia is unique to each individual—everyone experiences it differently.

@lexicminds

Dyslexia is a lifelong language-based learning difference.

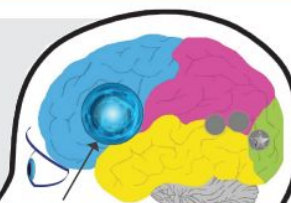
Research (Kilpatrick, 2019) indicates that individuals with dyslexia present with a phonological core deficit.

The most common indicators are listed below:

- Phonemic awareness
- Phonemic blending
- Rapid automatic naming
- Phonological working memory
- Letter-sound and sound-letter knowledge acquisition
- Nonsense word reading
- Developing an automatic sight word vocabulary which in turn affects reading automaticity, fluency, and comprehension.

"The key challenge with dyslexia is the ability to turn print into sound."
(Shaywitz 2005).

Decoding a word requires a longer trip through the dyslexic brain and it can be delayed in the frontal lobe stage. It can be hard for the dyslexic brain to process sounds, and strategies are required until the word is mapped to long-term memory. This means word retrieval is delayed, which can have significant effects on reading comprehension.



Dyslexia is NOT reading words backwards or reversing, inverting or sequencing letters incorrectly.

Dyslexia awareness

Poipoia te kākano kia puawai"

Nurture the seed and it will blossom – He whakatauki.

Dyslexia occurs on a continuum from mild to severe.

Internationally, the statistics suggest that
1 in 5
people have dyslexia.



Dyslexia is NOT a developmental lag or due to a lack of effort.

Kilpatrick (2019) states that individuals with dyslexia present with typically more than one of these and sometimes all.

Difficulties in learning to read, write and spell are heightened with a combination of these areas being present. Progress in these cases may be slower.

Dyslexia is NOT a visual problem.



Structured literacy teaching is the most effective approach for students who experience unusual difficulty learning to read and spell printed words.

Quoted from the The International Dyslexia Association website.

Dyslexia is NOT a sign of low IQ

Awareness to Action cycle

