



Tuesday 25th November, 2025

Our vision and values.



Health Consultation 2025 Results

We would like to thank all our whānau who completed the survey. We will use this information to help guide our Health Curriculum. The following areas have been deemed very important.

The full results of the [Health Consultation](#) are available to view on our Deanwell Website under 'OUR PLACE' - Health Consultation Results.

#1	Basic road and rail safety	91%
#2=	Water safety Keeping safe at home and school	88%
#3=	Expressing and managing emotions Body safety and seeking support (Keeping Ourselves Safe)	86%
#4	Personal body care and hygiene	84%
#5=	Fire safety Personal identity and self worth Teamwork Acceptance of difference in ability, gender or culture	81%

At Deanwell School, our commitment to honouring Te Tiriti o Waitangi is long-standing and unwavering.

Our Commitment to Mana Ōrite

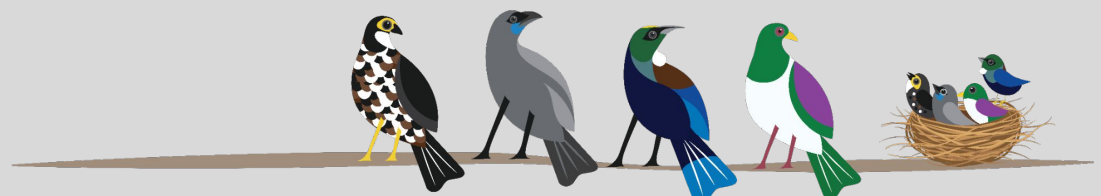
Te Tiriti o Waitangi is woven into who we are, how we lead, and the daily decisions we make for our tamariki. **Section 4 of the Education and Training Act 2020 states that one of the Act's purposes is to honour Te Tiriti o Waitangi and support Māori-Crown relationships. We want to reassure our community that Deanwell School actively meets this obligation and will continue to meet this obligation, through our whakatauākī, values, board policy, curriculum design, and teaching practice.**

Our tamariki, our mana mokopuna, children of inherent mana and descendants of greatness, sit at the heart of every decision. Each is born with a korowai, inseparable from their being, like a second skin, guiding them as they grow and learn; it holds their identity, whakapapa, culture, language, and the stories of their tūpuna. At Deanwell, we are committed to mana ōrite: shared power, mutual respect, and genuine partnership, guided by our jointly owned Cultural Relationship Framework. Our whakatauākī and values shape how we behave, lead, and relate, ensuring Māori ways of knowing and being are central and celebrated in how we teach, learn, and thrive together.

We also draw inspiration from Our Māori Queen, Ngā Wai Hono i te Pō, who, in her first speech, reminds us:

“Being Māori is not defined by having an enemy or a challenge to overcome. Being Māori is speaking our language, caring for the environment, learning our history, and choosing to be called by our Māori name... Being Māori is forever, but we must continually nurture that expression to control our own destiny.”

At Deanwell, being Māori is cherished. We do this by teaching a knowledge-rich curriculum informed by the science of learning, honouring Te Tiriti o Waitangi, integrating te ao Māori perspectives, and teaching both te reo Māori and English.



Our Whakatauākī

Our Whakatauākī, which took two years to write and many, many voices, is grounded in the wisdom of Kīngi Tāwhiao:

*Māku anō e hanga tōku whare. — I will build my house
Ko tōna tāhuhu he hīnau. — Its ridgepole will be hīnau
Ōna pou he māhoe, he patatē. — Its posts will be māhoe and patatē*

In times of loss and hardship, Kīngi Tāwhiao spoke of rebuilding with humble trees, symbols of resilience, humility, and determination.

We also draw strength from:

E kore au e ngaro; te kākano i ruia mai i Rangīātea. - I shall never be lost; the seed sown from Rangīātea.

Identity, whakapapa, and cultural heritage are taonga tuku iho, alive in our mokopuna.

Our Whakatauākī:

Mā tātou anō tō mātou korowai e whatu.

We will weave our own korowai.

‘Mā Tātou’ – Beyond Deanwell

This speaks to the relationships and knowledge outside our school community We:

- Engage with national and international academic research and people
- Stay informed about the political education landscape
- Foster relationships with tertiary institutions, Māori leaders, and business leaders.
- Network with many educators and schools across New Zealand.

These connections enrich everything we do and help us make informed decisions for our tamariki.

‘Tō Mātou’ – Everyone Who Enters Deanwell

This acknowledges all who step off the footpath and into our school.

In partnership with Ngaati Maahanga and guided by our Kaumātua Atutahi Riki, we ensure every person’s korowai - identity, whakapapa, and culture and is honoured and upheld. This commitment is living, active, and intentional.

‘Korowai e Whatu’ – The Work of Learning

We chose ‘whatu’ rather than ‘raranga’ to reflect that learning is intricate, layered, and sometimes challenging. Learning, like whatu, is a skilled, deliberate, and a meaningful process.

Our Kaumātua Atutahi Riki has carried our whakatauākī into spaces of profound significance, including speaking it at the tangi of Kīngi Tūheitia, acknowledging a great man and an exceptional leader. This reinforces the integrity and depth of our whakatauākī.

Each korowai, a living part of the person’s being that holds their identity, whakapapa, culture, and language, is woven by the individual themselves, yet shaped and strengthened by those all around them. Our teachers intentionally design and deliver a learning environment, grounded in respect and cultural understanding, that places every tamaiti at the heart of each thread.