

Monday 18th May, 2026



"We would love your support for our special day, please invite our grandparents to join us!"

Please help us to show our manaakitanga towards our Grandparents.

To help us provide a special morning tea, we kindly ask each whānau to contribute a small plate of kai to share with our Grandparents.

We understand the cost of living is high, so please only contribute what you are comfortable with – every little bit helps and is truly appreciated.

Plates can be dropped off at the hall kitchen on the morning of Friday 29th May.

Staff of Deanwell School will be parking on the road this day to keep the car park free for those Grandparents that need to be close.

Ngā mihi nui for your support.

Pam Quirke

Grandparents Day

2026

Friday 29th May

9:00am – 12:30pm

(Pōwhiri in the hall starts at 9:00am)

We warmly invite grandparents and whānau to join us for our special Grandparents Day celebration. This is such a special day for our tamariki, and we would love to have you there to celebrate with us. ❤️



Grandparents Day

2026

Friday 29th May

9:00am – 12:30pm

(Pōwhiri in the hall starts at 9:00am)

We warmly invite grandparents and whānau to join us for our special Grandparents Day celebration. This is such a special day for our tamariki, and we would love to have you there to celebrate with us. ❤️



Ohu Tuākana Cross-Country Day 2026

Last Wednesday was cross-country day. What a fantastic day we had. The kids had a wonderful day and did their best. Here are some photos of the special day.



MUSICAL

All Deanwell students are involved in the musical.

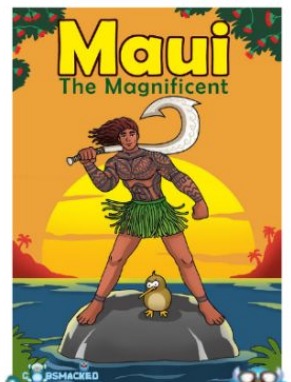
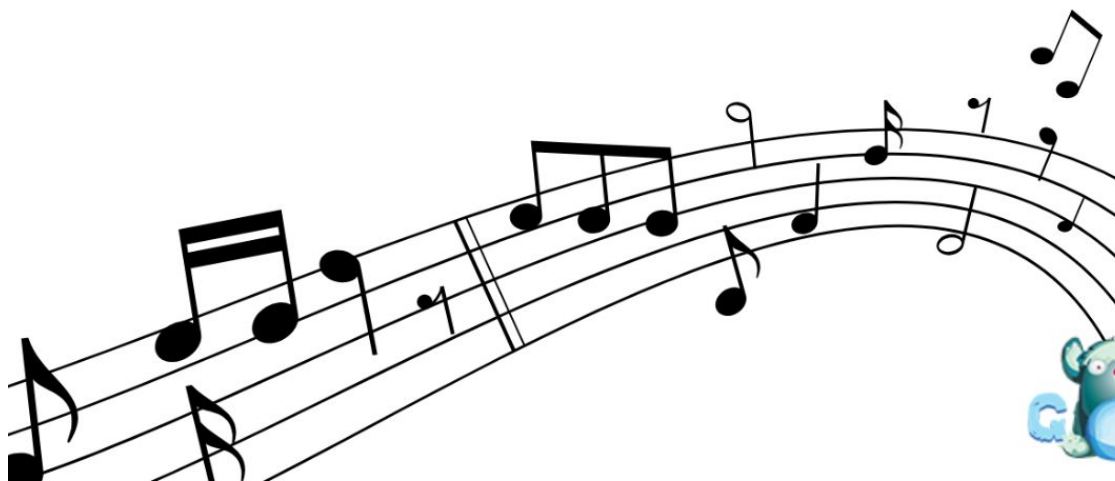
There are two choirs, each made up of a mix of younger and older students. On the following pages, you will find:

- which classes are in each choir and the songs they will be learning
- the dance/character your child's class will be playing

All whānau can access the music and lyrics your child/children will be learning so you can practise together at home.

Gobsmacked website

- Go to: www.gobsmacked.nz
 - Login for scripts:
 - **Deanwell School presents 'Maui the Magnificent'**
 - **username:** deanwell
 - **password:** maui
-
- All costumes are provided.
 - Please ensure that your child has a **black singlet and black shorts/tights** on show week so that changing into costumes is easy without privacy (except for *The Waves, Petipeti/Jellyfish and Sunrays*).

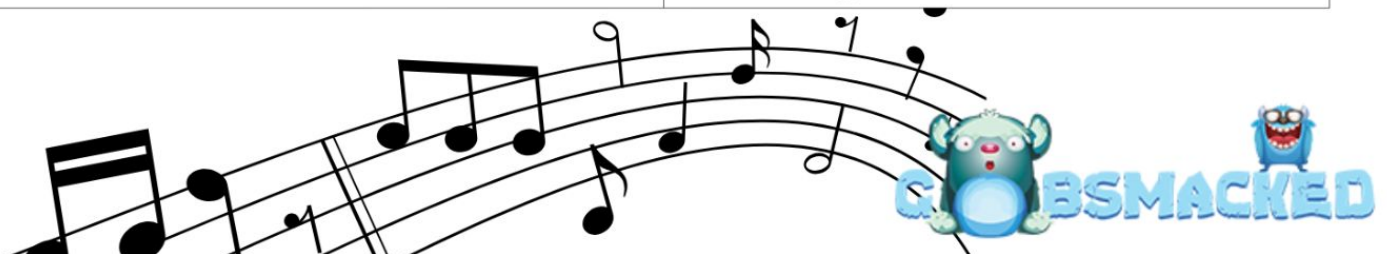


MUSICAL

Choir #1

Maids/Butlers	Kārearea Tahi	Josephine Taer	
Tuatara	Tūi Tahi	Tiffany Del Cerna	
Rays of Light	Kārearea Rua	Debbie McGrath	
Fish	Pīpī Manu Tahi Pīpī Manu Rua	Lisha Kevin Adelene Imlach	
Villagers	Kōkako Tahi	Keita Perry	
Fire Creatures	Pīpī Manu Toru Pīpī Manu Whā Pīpī Manu Rima Pīpī Manu Ono	Megan Ebborn Bronwyn Van Der Merwe Colleen Vette Fleur Elliot	

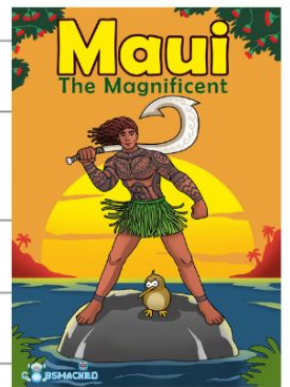
Name of song	What to teach the whole choir
What is it?	Choruses <i>(Verses are sung as a solo)</i>
Last Dance of the Petipeti	Verse 1 & Choruses <i>(Verses 2 & 3 are sung as a solo)</i>
The Life of the Pouakai	Chorus 1, 2 & 3 <i>(Verses sung by the Pouakai)</i>
Kiwi's Can't Fly	Bridge, Verse 1 & Choruses <i>(Verse 2 - (solo) Kiwi)</i>
Maui Boy is Home	Chorus and Bridge <i>(Verses are sung as a solo)</i>
Magnificent Magical Maui	Chorus <i>(Verses sung as a solo)</i>



MUSICAL

Choir #2

Sea Lions	Kōkako Rua	Emma Thien
Jellyfish	Kārearea Toru	Brontē Toterewa Tauranga
Rain	Pīpī Manu Whitu Pīpī Manu Waru	Brooke White Paula Malins
Black Eagles	Kererū Tahī	Jodie Dooley
Kiwis	Kererū Rua	Jess Stephens
The Tribe	Tūī Rua	Gareth Johnston



Name of song	What to teach whole choir
<i>Fabulous Flavoursome Food</i>	Chorus 2 & Verse 3 (Verse 1 & Chorus 1 – (solo) - Murirangiwhenua)
<i>The Mad Old Sun</i>	Entire Song (Verses can be sung as a solo)
<i>Anthem of the Patiki</i>	Entire Song (Verses can be sung as a solo)
<i>The Fire has Gone</i>	Chorus (Verse 1 (solo) Villager) (Verse 2 – Villagers)
<i>Sizzle Sizzle</i>	Choruses (Verse 1 (solo) – Mahuika) (Verse 2 – Mahuika & Fire Creatures)
<i>Magnificent Magical Maui</i>	Entire Song (Verses sung as a solo)

